

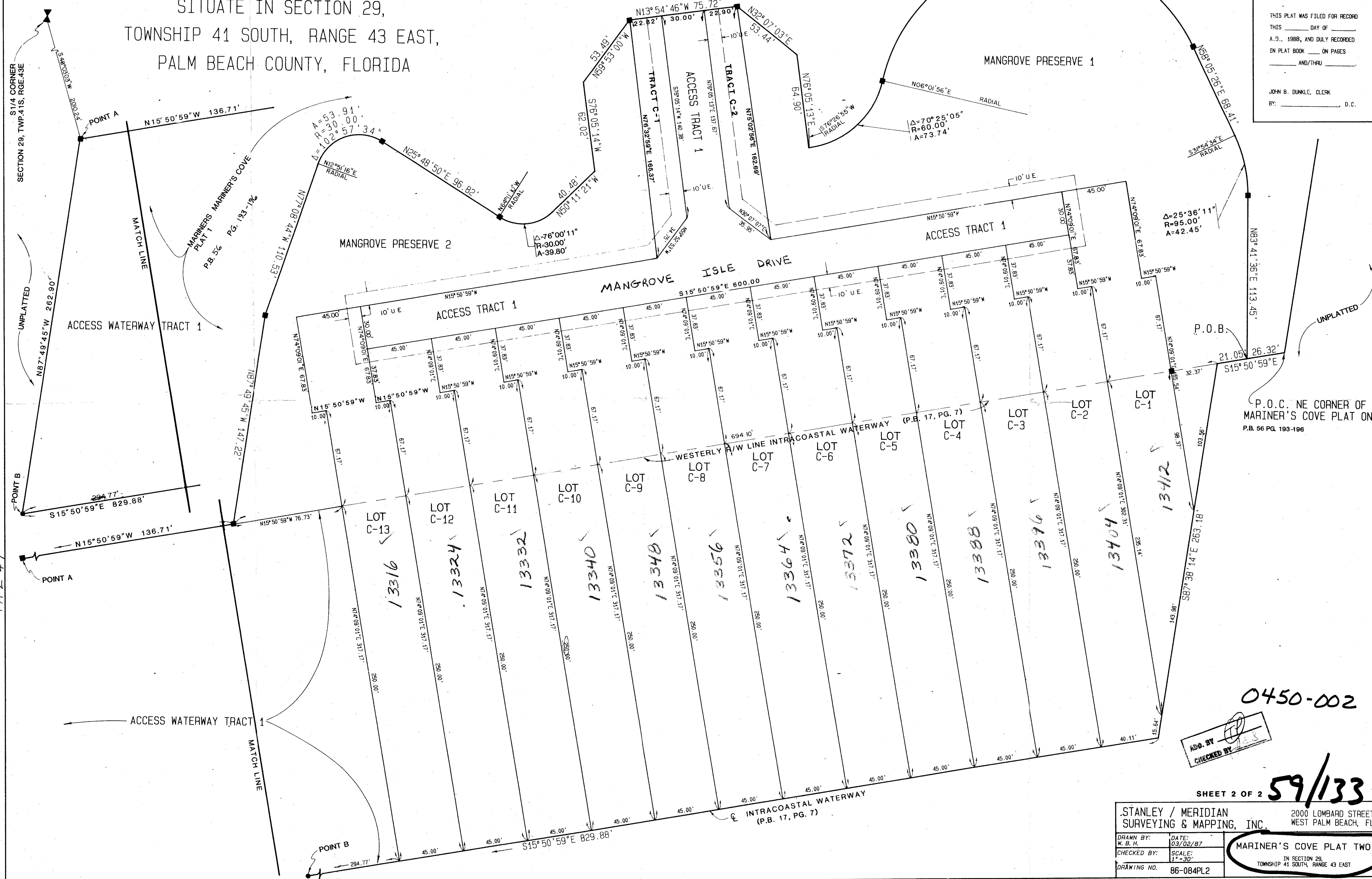
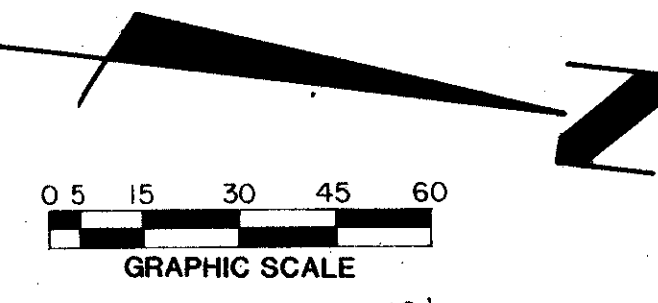
MARINER'S COVE PLAT TWO

PART OF OAK CREEK, A P.U.D.
 SITUATE IN SECTION 29,
 TOWNSHIP 41 SOUTH, RANGE 43 EAST,
 PALM BEACH COUNTY, FLORIDA

MARINERS COVE PLAT 1
 P.B. 56 PG. 193-196

133

STATE OF FLORIDA)
 COUNTY OF PALM BEACH)
 THIS PLAT WAS FILED FOR RECORD
 THIS _____ DAY OF _____
 A.D., 1988, AND DULY RECORDED
 IN PLAT BOOK _____ ON PAGES
 _____ AND/THRU _____
 JOHN B. DUNKLE, CLERK
 BY: _____ D.C.



SUBDIVISION # MARINERS COVE #2
 BOOK 59 PAGE 133
 FLOOD ZONE # 6 FLOODING # 1403
 QUAD # 12 TOWNSHIP 41 SOUTH
 SE PUD 81-165
 PUD NAME OAK CREEK PUD

TAZ 49

0450-002

ADD. BY [Signature]
 CHECKED BY [Signature]

SHEET 2 OF 2

59/133

STANLEY / MERIDIAN SURVEYING & MAPPING, INC.		2000 LOMBARD STREET WEST PALM BEACH, FL
DRAWN BY: W. B. H.	DATE: 03/02/87	MARINER'S COVE PLAT TWO IN SECTION 29 TOWNSHIP 41 SOUTH, RANGE 43 EAST
CHECKED BY:	SCALE: 1" = 30'	
DRAWING NO. 86-084PL2		